



## SSP-28764A "BREEZE II HD"



### SSP-28764A "BREEZE II HD"

Model number: 51SSP28764AH19S

4 beds • 2 baths • 2128 sq.ft. • 28' width • 76' depth

Our home building facilities invest in continuous product and process improvements. Plans, dimensions, features, materials, specifications and availability are subject to change without notice or obligation. Renderings and floor plans are representative likenesses of our homes and may differ from the actual homes. We invite you to tour a Home Center near you and inspect the highest value in quality housing available or call (480) 354-0370 to speak with a Home Consultant. Copyright 2017, CMH. All rights reserved.

<https://www.claytonmesa.com>

### CLAYTON HOMES-MESA

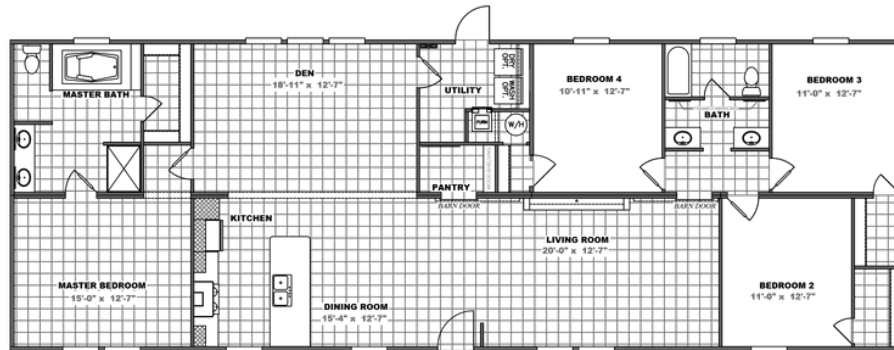
7835 EAST MAIN STREET  
MESA, AZ 85207

Monday - Thursday: 9am - 7pm  
Friday: 9am - 6pm  
Saturday: 9am - 5pm  
Sunday: Closed

(480) 354-0370



## SSP-28764A "BREEZE II HD"



### SSP-28764A "BREEZE II HD" Model number: 51SSP28764AH19S

4 beds • 2 baths • 2128 sq.ft. • 28' width • 76' depth

Our home building facilities invest in continuous product and process improvements. Plans, dimensions, features, materials, specifications and availability are subject to change without notice or obligation. Renderings and floor plans are representative likenesses of our homes and may differ from the actual homes. We invite you to tour a Home Center near you and inspect the highest value in quality housing available or call (480) 354-0370 to speak with a Home Consultant. Copyright 2017, CMH. All rights reserved.

<https://www.claytonmesa.com>

#### CLAYTON HOMES-MESA

7835 EAST MAIN STREET  
MESA, AZ 85207

Monday - Thursday: 9am - 7pm  
Friday: 9am - 6pm  
Saturday: 9am - 5pm  
Sunday: Closed

(480) 354-0370